



JORDAN FISHWICK  
EXCLUSIVE

High Peak







£1,295,000

### Features

- Stone Built Period Farmhouse
- Spectacular Location within The High Peak
- Stunning Views over The Dunge Valley
- Beautiful Gardens and Ten Acres of Land
- No Onward Chain



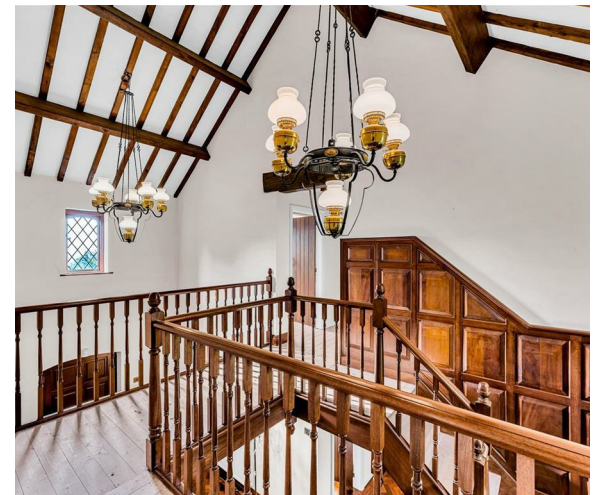
As you traverse the quarter of a mile private driveway, offering stunning views over the Dunge Valley, with woodland, hill, valley & river aspects, and even the occasional wild deer, you know a special property awaits, then you arrive at Kirby Clough Farm. This beautiful stone built detached farmhouse is offered with approximately 10 acres, and is set in the most tranquil and sheltered location, surrounded by gardens with an array of mature shrubs, specimen trees, and herbaceous borders, and various stone terraces suitable for al fresco dining.



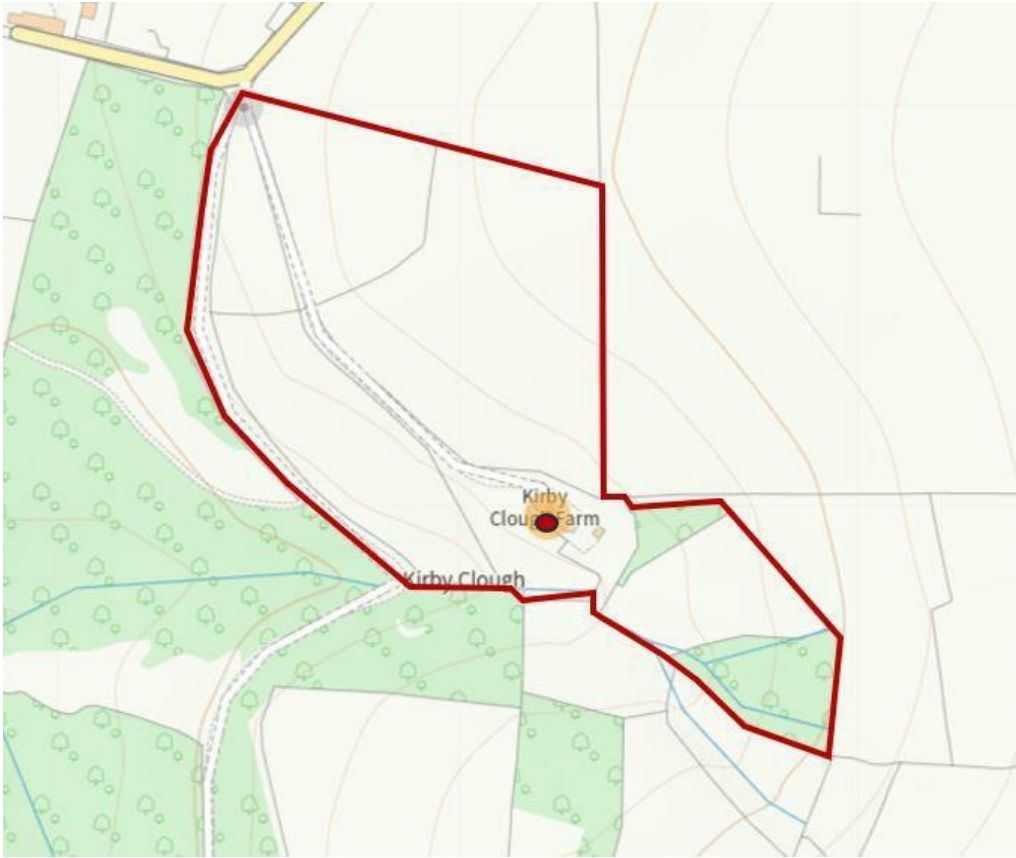


## General information

- Tax Band: G
- Sqft: sq ft
- Plot: 10.00 acre(s)
- Bedrooms: 4
- Bathrooms: 2
- Postcode: SK23 7RF



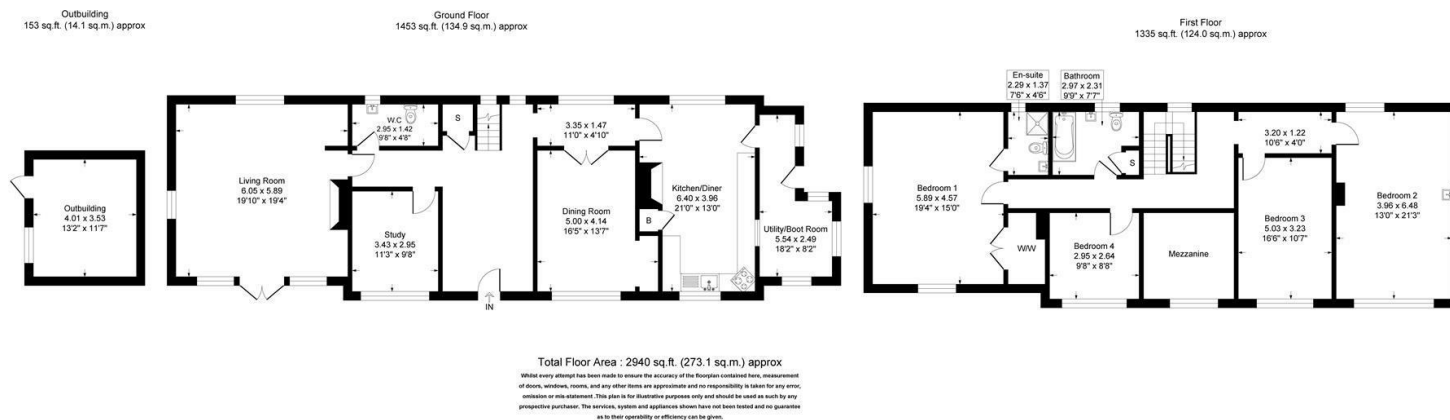




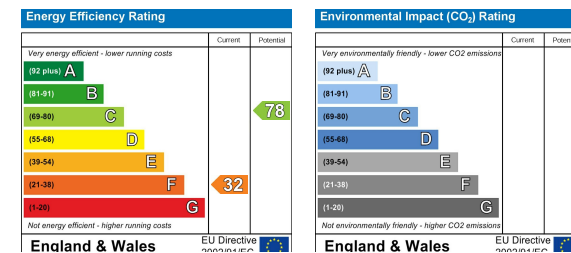








IMPORTANT: we would like to inform prospective purchasers that these sales particulars have been prepared as a general guide only. A detailed survey has not been carried out, nor the services, appliances and fittings tested. Room sizes should not be relied upon for furnishing purposes and are approximate. If floor plans are included, they are for guidance only and illustration purposes only and may not be to scale. If there are any important matters likely to affect your decision to buy, please contact us before viewing the property.



JORDAN FISHWICK  
EXCLUSIVE

Jordan Fishwick  
14 Market Street, Disley, Cheshire, SK12 2AA  
01663 76 78 78  
disley@jordanfishwick.co.uk  
www.jfexclusive.co.uk